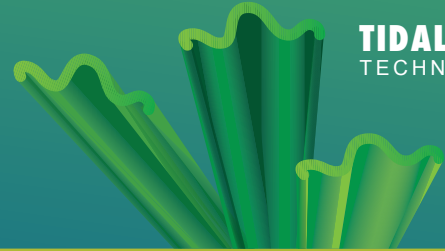


RIVIERA TURF™



MADE IN THE U.S.A.



**TIDAL WAVE
TECHNOLOGY**

CHERRY HILL

FEATURED BENEFITS

- Cherry Hill was designed specifically to replicate the lush beauty of natural grass specifically for landscape applications.
- The Tidal Wave yarn system has a combination of field and apple green blades combined with a curly brown and olive thatch layer.
- The 1 5/8" pile height highlights all the beauty of a lush thick lawn that will be the envy of the neighborhood.
- The Tidal Wave shaped blades have our Luster Guard™ technology that diffuses the sun's rays. The results are extremely low luster and shine along with a very natural appearance.

RECOMMENDED USE: LIGHT TO MODERATE
COLORS: FIELD/ APPLE

YARN

TYPE: MONOFILAMENT
COMPOSITION/STRUCTURE: POLYETHYLENE

TURF

PILE/FACE WEIGHT: 50 OZ.
MACHINE GAUGE: 1/2 IN.
PILE HEIGHT: 1 5/8 IN.

BACKING

PRIMARY BACKING: WOVEN POLYPROPYLENE
SECONDARY BACKING: POLYURETHANE
COMPOSITION/STRUCTURE: 2 LAYERS 13 PIC BLACK
WEIGHT: 6 OZ. PER SQ. YD.

FINISH COATING

COATING: POLYURETHANE 20 OZ. PER SQ. YD.
TOTAL PRODUCT WEIGHT: 76 OZ.

PARTICULATE INFILL

TYPE: QUALITY INFILL
WEIGHT: 1-3 LBS. PER SQ. FT.
HEIGHT: APPROXIMATELY 1/2 IN. - 3/4 IN.

MANUFACTURED ROLLS

WIDTH: 15 FT.
APPROXIMATELY LENGTH: 85 FT.
DRAINAGE RATE: > 30 IN. PER HOUR

MAIN APPLICATION:



RESIDENTIAL



PETS



COMMERCIAL

**LUSTER GUARD™
TECHNOLOGY**



Luster Guard™ diffuses the sun rays which eliminate reflection and shine



WWW.RIVIERATURF.COM